

WHATELY HISTORICAL SOCIETY



Barn cats at Quonquont Farm, 1937 WHS 2025.062.001

WHAT IS THIS? • It's Groundhog Day at the Whately Historical Society. Every time we think we're on the verge of having catalogued every item stored in boxes, drawers, and closets at the Museum and in barns around Town, we stumble over another gap. Here's the latest—tucked into a box of otherwise recorded miscellany, this intriguing wood and metal . . . thing. Here's a clue: it measures 10" x 15 1/2" x 7/8".



WHS 2026.010.001

Be the first to identify the mystery object and win a Whately Historical Society t-shirt of your choice! Send an email to us at info@whatelyhistorical.org. Good luck!

FOUR-LEGGED FRIENDS • Domestic animals have been central to life in Whately from the time of the Town's founding. Three of the warrants passed on May 6, 1771, at the first Town meeting, had to do with animals:

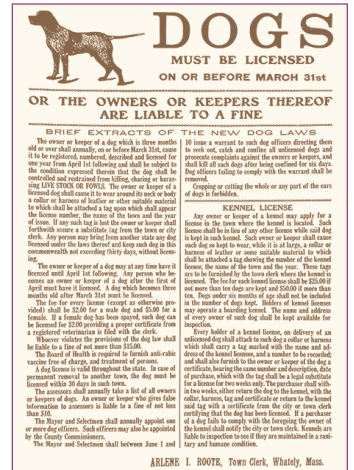
- That hogs may run at large from May 1 to October 15, being properly yoked and rung.
- To let two milch [sic] cows to a family run on the Commons.
- To build a pound forty feet square.

The pound remains, 255 years later, at its original site on Haydenville Road; few hogs are encountered in Whately these days, and almost never 'at large'; but the regulations regarding cows on the Commons (which spanned today's Chestnut Plain Road throughout Town Center) continued to evolve! Twice, in 1817 and 1818, the Town voted not to let cattle run on the Commons.

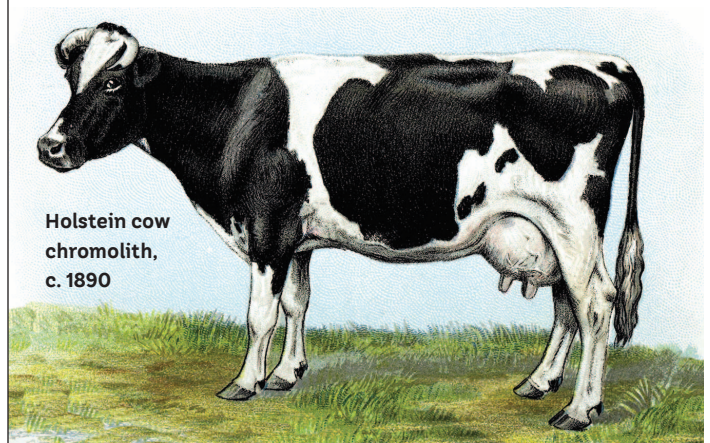
And, presumably after a great deal of discussion, the Town voted in 1820 to let one Cow run on the Commons with a strap round her neck with the owner's name. Sounds like a compromise decision to us, at best.

Fast forward to the 1930s, when regulation of household animals had taken hold. This poster details "Brief Extracts of the New Dog Laws," which were administered by Town Clerk Arlene Roote (1888–1964). Given how long the 'brief extracts' are, we can only imagine the length of the full statute!

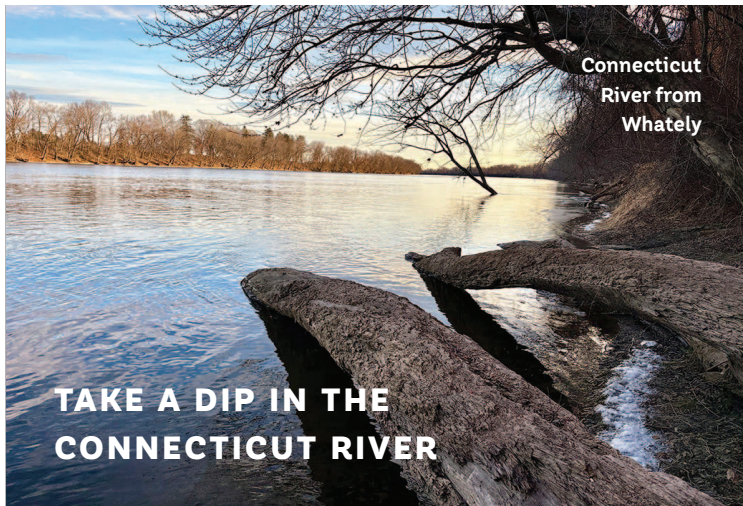
We haven't found evidence that Whately's leaders ever tried to regulate the activity of the Town's cats, which may have been wise. We can guess the reaction of the three free-spirited barn cats at Quonquont Farm (shown at top). They're still laughing.



New Dog Laws, WHS 2014.007.001



Holstein cow chromolith, c. 1890



Our *Connecticut River* exhibit, which will open on May 24, is fast approaching, even as sections of the river in Whately were in a deep freeze this winter. Mark your calendars for two programs this spring.

Wednesday, April 15, 7 p.m.
Whately Town Hall, 194 Chestnut Plain Road

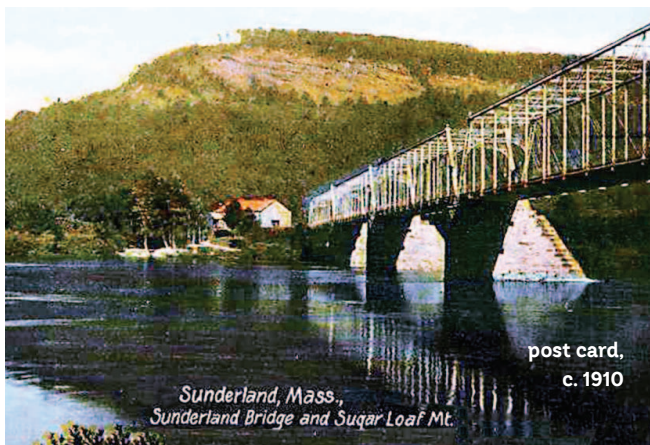
“History of Fish Passage on the Connecticut River”
 Caleb Slater, Hatchery Supervisor, Mass Dept of Fish and Wildlife

“River Stewardship: What’s the latest with the Connecticut River and what can we do to take care of it?” Nina Gordon-Kirsch, River Steward in Massachusetts, Connecticut River Conservancy

Thursday, April 30, 7 p.m.
Whately Town Hall, 194 Chestnut Plain Road

“A Brief History of Maps of the Connecticut River”
 David Bosse, retired Librarian and Curator of Maps, Historic Deerfield

“Three Generations of the Sunderland Bridge”
 Stephen Mikesell, Whately-based bridge historian



SPRING FESTIVAL

Sunday, May 24, 12-2 p.m.
(following the Veterans Memorial Parade and Program) · Join friends in Whately and from beyond for fun, food and music!

- ★ Rick Martin, blacksmith, Hatfield, MA, will demonstrate making Colonial-era iron tools, using a forge
- ★ Rick Hamelin, potter, Warren, MA, will demonstrate making redware, using a potting wheel*
- ★ *OverEasy Jazz** local musicians playing New Orleans-style jazz from the 1920s and 1930s—first time in Whately!
- ★ Masa Mexicano, Florence, MA
- ★ Cliff’s Smokin’ Backyard Barbeque, Shelburne Falls, MA—first time in Whately!
- ★ Maple syrup, Brookledge Sugarhouse, Whately
- ★ FREE ice cream, Maple Valley Creamery, Hadley, MA



**supported by the Massachusetts Cultural Council through the Whately Cultural Council*

Support the Historical Society

- Donate items that illustrate Whately’s past and complement our current holdings. Write about your possible gift to info@whatelyhistorical.org, or stop in to the Museum on Tuesday, 9 am–12 pm.
- Volunteer to help maintain our collections and organize our programs and events. Call Adelia Bardwell at (413) 665-3837 or drop by the Museum.
- Support WHS by mailing us a check (P.O. Box 7, Whately, MA 01093) or by credit card or PayPal at www.whatelyhistorical.org. All gifts are tax-deductible to the extent allowed by law.

Museum in Town Hall, 194 Chestnut Plain Road, Whately
whatelyhistorical.org · info@whatelyhistorical.org
Visit us on Facebook: [whatelyhistorical](https://www.facebook.com/whatelyhistorical)