



# NEWS from the WHATELY HISTORICAL SOCIETY

**May 2025**

in Town Hall

194 Chestnut Plain Road, Whately, MA 01093

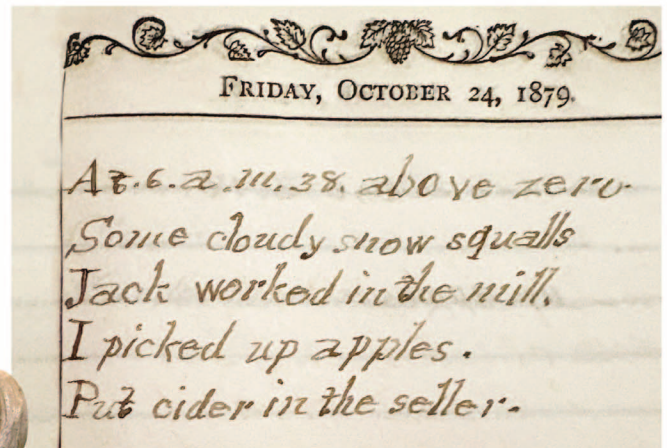
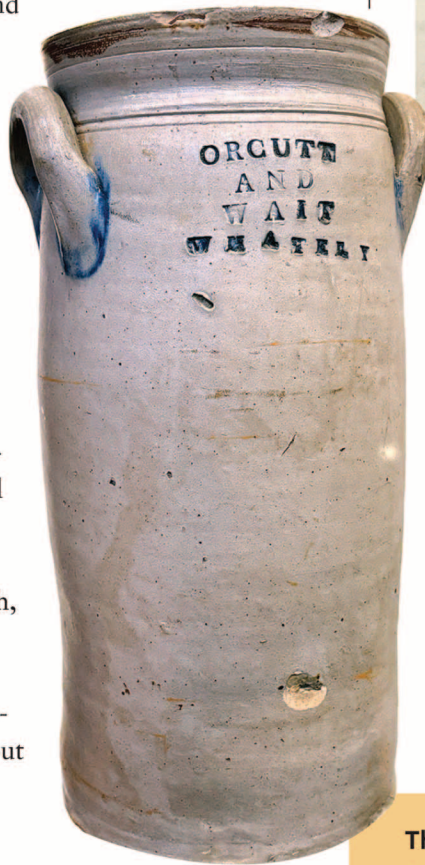
info@whatelyhistorical.org · www.whatelyhistorical.org

## WHAT'S FOR DINNER? A History of Food in Whately New exhibit to open Sunday, May 25.

In 2025 we have a nearly endless array of choices as we plan our family dinners every night. What kind of choices did our predecessors have? *What's for Dinner?* explores foods and table settings from 1775 to 1975 in fifty-year increments, using archaeological evidence, journals, recipes and cookbooks, and the objects that made food preparation and cooking possible.

As the United States became increasingly urban, Whately remained quintessentially rural, with plentiful access to local produce, dairy products, and eggs. Yet changes in cooking technologies, food preservation and transportation, economics and social context all contributed to changes in everyday meals. See how Whately residents of the 18th, 19th, and 20th centuries cooked and served their meals—and imagine what future generations will say about our own eating habits and foodways!

**FAMILY EXHIBITS** of the Skroski family of East Whately and the Scott family of North Street.



Above: George Washington Crafts (1821-1913) kept a remarkable diary – 17 volumes of notes from 1879 to 1909 (WHS 1981.017.001b). Craft maintains the accounts for his farm, but he also notes the weather, his work raising apples, tobacco, and beef cattle, details of his religious and social life and much about his family house on North Street, built by his grandfather Benoni Crafts (1725-1812) in 1760.

Left: A sturdy butter churn, one of the earliest examples of Whately stoneware (1815-17), was made by Stephen Orcutt, Jr. and Luke Wait. Its white clay, dug on the New Jersey shore, was brought by river boat up the Connecticut River from Long Island Sound (WHS 1981.097.001a).

The Whately Historical Society museum is open to the public on Tuesdays, 9 a.m.–noon; first and third Saturdays June–November, 10 a.m.–noon; and during festivals and special programs.





**WHS SPRING FESTIVAL • Sunday, May 25, 2025, 11 am-2 pm** Join Whately friends and neighbors for music, entertainment, education and good food! The Festival will begin following the parade from the Whately Congregational Church to Town Center Cemetery and the memorial ceremony at the Veterans Memorial Park, all organized by the Whately Grange.

- ✦ **Bees:** Greg Cootware, master beekeeper and Vice President of Franklin County Beekeepers\*
- ✦ **Yo-yo Man,** John Higby
- ✦ **Music by** Whately's Packing Shed Band\*
- ✦ **Free ice cream** from Maple Valley Creamery of Hadley
- ✦ **Food by P'frogi and Masa Mexicano**
- ✦ **Maple syrup for sale** by Brookledge Sugarhouse
- ✦ **Grand opening** of "*What's for Dinner?*" exhibit in the Historical Society Museum

\*Supported by the Mass Cultural Council through the Whately Cultural Council

**Save the date! WHS ANTIQUES APPRAISAL EVENT, September 13** • Wonder what that chair, picture or vase is worth? Here's your chance to find out. Doug Bilodeau of Douglas Auctions will be at Town Hall in the afternoon of Saturday, September 13 to appraise your furniture, jewelry, pottery, artwork, toys and more. Good, clear photos are OK for larger objects. The fee of \$5 for the first object and \$3 for any additional ones goes to the Historical Society.



### REMEMBERING A VALUED VOLUNTEER

Gail Gridley Tilton (1937-2025), an enthusiastic and hardworking Historical Society volunteer for several decades, will be sorely missed. Although Gail was born in Chesterfield, she and Alan Tilton, who were married in the West Whately Chapel, loved our town. Gail served as Co-Curator of the Historical Society until she and Alan moved to a retirement community in Amherst. She was instrumental in the implementation of our digital catalogue, setting up hundreds of the individual records that allow us to manage our collection. We will miss her.

whatelyhistorical.org • info@whatelyhistorical.org • Facebook: whatelyhistorical • In Town Hall, 194 Chestnut Plain Rd., Whately, MA 01093

## Support the Historical Society

The Whately Historical Society was founded in 1966 to preserve the town's history and to educate townspeople and others about Whately's past. The Society sponsors programs, research and activities about the history and culture of Whately; operates a museum of Whately documents, images and objects; and responds to inquiries about Whately history and genealogy.

Explore [www.whatelyhistorical.org](http://www.whatelyhistorical.org) to find out more about our collections, access resources about Whately history, learn about future events, or purchase Town histories, historic postcards and note cards, T-shirts, and sweatshirts.

### How You Can Help

- Offer to donate items that illustrate Whately's past and augment our current holdings. Write to us for an appointment with our archivist and curator at [info@whatelyhistorical.org](mailto:info@whatelyhistorical.org).

- Help to maintain and document our collection and to plan, market and organize our programs and events. Call Adelia Bardwell at 413-665-3837, email us, or drop by on Tuesdays, 9 a.m.-noon.
- Become a member of WHS with an annual donation of \$10 or more. Larger contributions are essential to our ongoing operations, supporting the preservation, documentation and expansion of our museum collection. WHS is a 501(c)(3) charitable organization; donations are tax-deductible to the extent allowed by the law. Send your check, made out to: Whately Historical Society, with your name, address, phone number and email address to Whately Historical Society, P.O. Box 7, Whately, MA 01093. You may also pay with a credit card or via PayPal at [www.whatelyhistorical.org](http://www.whatelyhistorical.org).

**Leaders:** Neal Abraham, President; Adelia Bardwell, Immediate Past President; Larry Ashman, Vice President; Sara Cooper, Treasurer; Gretchen Behta, Secretary; Dereka Smith, Archivist; Jane Grybko, Curator; Maida Goodwin, Webmaster