

Whately Transfer Station Calendar

- 2024-

Please note: only trash in Town of Whately bags or with Whately stickers will be accepted. Buy them at the transfer station. 10 bag rolls for \$25. They are the most affordable trash disposal option in town!

*** Spring Bulky Waste Collection day – May 18.** We hope to resume bulky waste collection in May, if we can do so safely. Along with the Franklin County Solid Waste Management District, we'll weigh Covid risk levels later this spring. Please check the Transfer Station page on the Whately Town website for future updates.

Brush Chipping – May 4 & June 1 only, 8 a.m.-Noon. Bring brush up to 6" in diameter, free of nails & dirt. NO leaves, grass, or construction debris. Landscaping chips available.

Batteries—rechargeable and non-rechargeable. Also, cell phones & batteries; laptop, camera and power tool batteries. See attendant for details.

Books, etc. Drop off any books, (hard and softcover) free—into the Books drop off box.

Clean, dry clothing & clean worn, torn or tattered rags, etc. – Drop in Salvation Army box *in bags please*, e.g., socks, shoes, gloves; belts, ties, bras & purses; linens -curtains, pillows, comforters, sheets, towels and stuffed animals...

Compost—Drop food waste, etc. in the container next to the book box and **save money** on trash costs!

Fluorescent lights/bulbs —Free drop off and see attendant for details. NO broken bulbs please!

Plastic Bags - All types, must be clean, dry and have no paper inside or sticky labels (tear them off even if bag rips). Drop into plastic bag bin. See attendant for details.

Rx prescription and over-the-counter medicines – Securely dispose old Rx pills, tablets, vitamins, and veterinary medications -**no liquids please or chemotherapy drugs**- in the drop box in the lobby of Whately Police Dept. from **8 a.m.-8 p.m. daily**.

Sharps Collection – Dispose of needles for personal health, get free collection boxes at (and return to): Whately Health Center, 181 State Rd., **Tuesdays, 9-2 only. Disposal also at Whately Police Dept. daily.**

Swap Shed – Tuesdays p.m. & Saturdays. **Wear a mask inside for now. PLEASE** consider our staff and other residents, don't bring junk or TV's! All items should be in **working condition** & re-usable. Bring clean, useful household items, sporting goods, and small toys, etc. NO exercise or computer equipment. Take items you can use free.

Thermometers —ONLY mercury-filled thermometers. See attendant.

*** Hazardous Waste Collection day, Sept. 21** - at Greenfield Community College. Bring toxic materials like motor oil, pesticides and solvents, etc. Pre-registration required, call 772-2438.

*** Fall Bulky Waste Collection Day – Oct. 19.** See above spring bulky waste collection info.

For old furniture, stoves, freezers & refrigerators—*doors must be removed first*, mowers, BBQ tanks, computers, monitors and TV's, furniture, metal items, air conditioners, bicycles, bulky plastic items, beds, radios, tires & more. Fees charged for most items to cover costs. See attendant for prices.

After the holidays, bring real Christmas trees for chipping. More recycling information over →→

- Remember to recycle! PUT THIS CALENDAR ON YOUR REFRIGERATOR -

In 2023, Whately residents saved \$1,000's by composting & recycling over 40% of our waste at the transfer station. Thank you all for doing your part! —**Whately Solid Waste Management Committee**



WHAT CAN GO IN THE WHATELY RECYCLING BOXES?

YES -Please empty and rinse all container items	NO – but several items below have other recycling options*		
Aluminum: <i>Please clean first!</i> <ul style="list-style-type: none"> ➤ Cans, aluminum foil ➤ pie pans, aluminum trays 	Siding scrap metal foil-wrapped beverage pouches (ex. Capri Sun, squeezable baby food) pots & pans, utensils, tools, etc.		
Metal cans: <i>Please clean first!</i> <ul style="list-style-type: none"> ➤ food and beverage cans (metal lids OK) ➤ pet food, soup cans (metal lids OK) 	hangers scrap metal Pots & pans paint cans car parts, pipes, fuel tanks, etc. No aerosol spray cans appliances toys		
Glass: <i>Labels do not need to be removed.</i> <ul style="list-style-type: none"> ➤ food and beverage bottles and jars 	Ceramics, baking dishes, dishware drinking glasses, vases canning jars broken glass	cookware (Pyrex) coffee mugs medicine bottles plate glass	light bulbs* (see fluorescent lights below) glass art mirrors windows eye glasses
Plastics: <i>Smaller than 2.5 gallons ONLY. Please Flatten, if you can.</i> <ul style="list-style-type: none"> ➤ food containers: margarine, yogurt, cooking oil, condiments, ➤ beverage bottles and jugs: soda, water, juice, milk ➤ detergent, soap and hand sanitizer bottles ➤ personal care bottles: shampoo, conditioner, etc. ➤ clear plastic clamshells (no black or Styrofoam) ➤ clear plastic egg cartons and clear plastic cups 	All styrofoam (polystyrene) Take-out food containers and utensils, straws, plates plastic wrap/sheeting cookie trays liners from food packaging cellophane food bags (e.g., pasta, candy bars, cookies) frozen food bags/pouches meat trays	medicine & pill bottles “packing” peanuts or foam or blister pack packaging clothes baskets* toys*(see swap shed) flower pots* black plastic or tarps 5-gallon pails; buckets VCR, CD cases	No bottles that contained motor oil, anti-freeze, pesticides, pool chemicals or other hazardous stuff curbside/other plastic bins* indoor/outdoor/patio furniture* swimming pools*, tarps, hoses*; PVC piping or tubing* containers bigger than 2.5 gals*; nalgene water bottles wine corks
Cartons: <i>Recycle with containers, not paper. NO straws.</i> <ul style="list-style-type: none"> ➤ milk and juice cartons (plastic spout and cap OK) ➤ soymilk, soup and drink boxes (remove straws) 	foil-wrapped pouches (ex. Capri Sun) frozen juice cartons frozen food packaging	plastic straws	
Paper: <i>Clean paper and cardboard only-Flatten all boxes.</i> <ul style="list-style-type: none"> ➤ newspaper, inserts, magazines, junk mail ➤ white, colored, glossy, and construction paper ➤ corrugated cardboard, empty pizza boxes (<i>no food</i>) ➤ boxboard (for example, cereal boxes) ➤ gift wrap, gift bags, cards, gift tissue paper (no metallic inks, foil, wire, glitter) 	soda, beer cartons frozen juice or ice cream cartons take-out containers paper towels, napkins** egg cartons** pizza with food/food boxes** (** put these 3 items in food compost bins)	butter, margarine boxes tissues Tyvek or padded bubble envelopes stickers & sticker sheeting paper cups, plates** (if not plastic coated, then in food compost bins)	glossy boxes that show white strands when torn (frozen food boxes) blueprints dirtied paper (pet waste, paint) copy paper wrappers
Other* (ask attendant first) <ul style="list-style-type: none"> ➤ Plastic bags (Clean, dry, empty and no stickers) ➤ Household batteries (separate different types) ➤ All fluorescent lights (separate different types) ➤ All books, telephone books, etc. (see other side for details) 	* Several of the above items in the ‘No’ column can be disposed of on bulky waste collection days (see recycling calendar) or in the food waste composting container at the bottom of the transfer station ramp, or in bulky plastic container. -ask attendant for details.		

News from the

WHATELY HISTORICAL SOCIETY

www.whatelyhistorical.org

info@whatelyhistorical.org

In Town Hall

194 Chestnut Plain Road

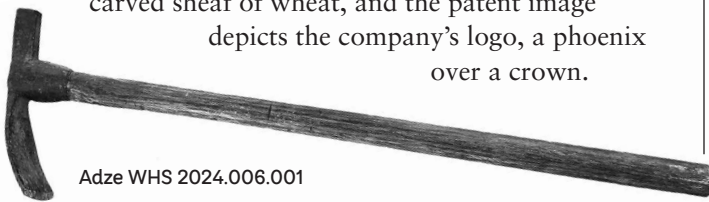
Whately, MA 01093

March 2024

Photo: Frank and Tony
Zoly in onion field, 1922.
(WHS 2003.002.002)



RECENT ACQUISITIONS • Kit Fleuriel donated vintage **carpentry tools** used by Paul Fleuriel (1935–2022), including a dozen augurs; a large adze with cutting edge perpendicular to the handle, used to cut or shape large pieces of wood; and a ‘warranted’ Phenix saw, guaranteed to be of lasting good quality. The saw handle is characteristically decorated with a carved sheaf of wheat, and the patent image depicts the company’s logo, a phoenix over a crown.



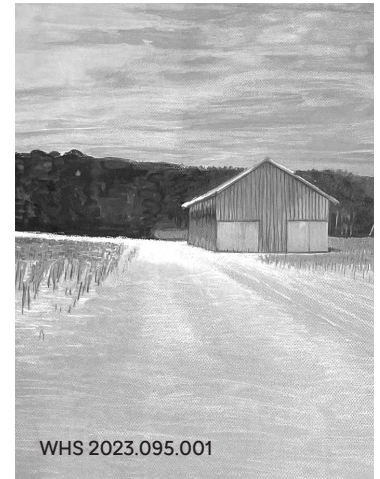
Adze WHS 2024.006.001

A gift from Martha Swift includes several **items used in the production of shade tobacco**, first introduced in Whately around 1900 when farmers began to produce crops that rivaled the finest Sumatran tobacco, used primarily for cigar wrappers. The largest tobacco company in the region, Consolidated Cigar Co., which bought the Swift tobacco interests in 1944, continued planting shade tobacco throughout the 20th century. The Swift gift includes a large sewing needle, used to attach shade cloth to metal frames; a four-foot lath with hooks for hanging cut tobacco plants to dry; and a large canvas-lined basket for gathering cut tobacco leaves.



Basket WHS 2023.145.001

Ann Reiss donated her lovely large blue **painting** of a barn on Long Plain Road that was destroyed in a microburst in 2020. Reiss’ palette includes a rich brown tint that she made by hand from black walnuts grown near the property. The painting complements WHS’s growing collection of paintings, photographs and drawings of Whately barns.



WHS 2023.095.001

WHATELY YOUTH CENTER • WHS is seeking material about the Whately Youth Center, conceived and built with the generous support of Jim (1928–2022) and Ann LaSalle (1931–2017) in memory of their son Richard (Pickles) LaSalle (1955–72). Many Town residents donated funds, materials, and labor to make the building possible. The Center served the Town well until around 2000, when the addition of the then-new Elementary School made possible its refurbishment to serve the Police Department.

If you have photos or memorabilia from athletic events, holiday parties, Scout meetings and other activities at the Youth Center, or of the building construction, please contact us at info@historicalsociety.org or drop by on Tuesday morning. We are happy to scan photos and return the originals to you. Help us capture the record of this important piece of recent Town history!

Check out Whately Historical Society on Facebook!

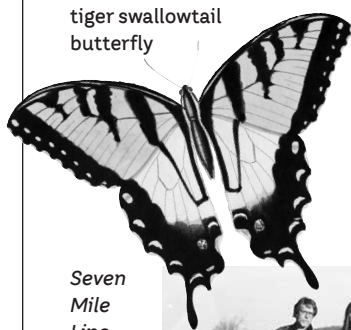
UPCOMING EVENTS

"Those We Can Trace: Indentured Servant Children in Hatfield," a talk by Sue Maciorowski about the history of children 'hired out' as workers in exchange for room and board · Thursday, March 21, 6 p.m., Hatfield Congregational Church, 41 Main Street, Hatfield · Co-sponsored by the Whately Historical Society and the Hatfield Historical Society

Indenture

Spring Festival, Sunday May 26, Town Hall, following the Memorial Day parade and festivities (c. 11 a.m.–2 p.m.) · Music by *Seven Mile Line* · Fun activities about insects led by Micky McKinley of the Hitchcock Center for the Environment · Basket-weaving demo by Laurie Smith · Food by Tom's Long Hot Dogs · Free ice cream from Snow's Ice Cream, Greenfield

tiger swallowtail butterfly



Seven Mile Line band



"An Illustrator's Journey: From Whately to the World of Children's Books and Back Again,"

a talk by Monica Vachula, noted local illustrator · Thursday, June 20, 7 p.m. Whately Town Hall Auditorium, 194 Chestnut Plain Road



2024 EXHIBITIONS

Open to the public May 26 through mid-December.

Childhood · How did Whately children work, play and learn in times past? Our 2024 exhibit will focus on childhood in Whately from the late 18th to mid-20th century. Enjoy our array of photographs, games, toys, illustrated books, and costumes.



His father's glove, loaned by John LaSalle

Family Exhibits · with photos and memorabilia of the Fred Farrick family of East Whately and the Waite family of Town Center.

Support the Historical Society

Offer Materials—We're always looking for items that illustrate the past and complement our holdings. Call for an appointment to bring materials to Town Hall for review by our archivist and curator. · **Volunteer**—We always need help maintaining and documenting the collection, social media, and planning and supporting events. If you'd like to help, call Adelia at 413-665-3837, email info@whatelyhistorical.org, or drop by Tuesdays, 9 a.m.–noon. · **Contribute & Become a Member**—Join others who care about the history of our town! Donations to support preservation, documentation and expansion of our museum collection are tax-deductible to the extent allowed by law. Individual donors of at least \$10 become one-year members; higher annual contributions are encouraged: Supporter \$40, Sponsor \$75, Patron \$150. Donors of \$500 or more become five-year members. Send your check, made out to: *Whately Historical Society*, with name, address, phone number and email address to Whately Historical Society, P.O. Box 7, Whately, MA 01093. You may also pay with a credit card or via PayPal at www.whatelyhistorical.org.

The Whately Historical Society was founded in 1966 to preserve the town's history and to educate townspeople and others about Whately's past. The Society sponsors programs, research and activities about the history and culture of Whately and the region; maintains a museum of Whately documents, images and objects; and responds to inquiries about Whately history and genealogy.

The Whately Historical Society is incorporated as a charitable organization in the Commonwealth of Mass. and has been designated as a 501(c)(3) charitable organization by the IRS.

Explore www.whatelyhistorical.org to learn more about our collections, access resources about Whately history, learn about future events, and purchase Town histories, historic postcards and note cards, T-shirts, or sweatshirts.

Officers

Neal Abraham, President
Adelia Bardwell, Immediate Past President
Larry Ashman, Vice President
Sara Cooper, Treasurer
Gretchen Behta, Secretary
Dereka Smith, Archivist
Jane Grybko, Curator
Maida Goodwin, Webmaster



The WHATELY SCOOP

Certified News for the Town
with the Milk Bottle...

Volume 21 ♦ Number 3 ♦ March 2024 ♦ Whately, Massachusetts

21 Year and going strong. Thanks to you!

Whately Roadside Clean-up

by Monserrat Archbald

Once again, we will be spending a beautiful spring morning picking up trash along Whately's roads. Please join us! We'll meet at the old Town Hall at 9 am on **Saturday, April 27**, rain or shine. Bring bags to reuse if you have them (feed/seed/pellet bags work well), gloves, and your own water bottle. Dress for getting dirty. We'll have lots of our own reused bags and a truck for the final haul. Questions? Call or text Becky Jones (413-387-7746) or Montserrat Archbald (413-559-9998).

A Time of Transitions in Whately

By Joyce Palmer Fortune, Selectman

About this time last year, we were in the process of working out how to make our way through a big transition, one brought on by the retirement of one of our town's most valuable, hard-working and versatile employees. Search though we did, we found it impossible to find qualified applicants willing to work for our small town in the critical role of Treasurer-Collector (T/C), the job held by Lynn Sibley at the time of her retirement.

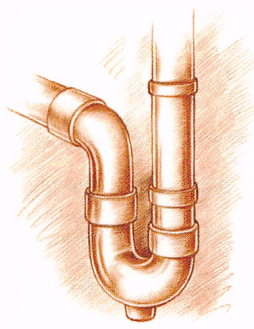
So many municipal jobs, like T/C, are critical because they have to be done right and training is extremely important. People with such training are hard to find in today's employment market, so we were kind of stuck. In a move that may seem obvious in hindsight, our town offices staff trained each other up for the jobs we needed. Our town offices employees stepped up to the plate and hit that one out of the park. We now have an

office staff who are very much cross-trained in each other's roles, which gives us a flexibility that is enviable in small town government. Besides our awesome town offices staff, there is another person who advocated and made the whole process happen in a manner as smooth as possible. I am of course referring to our current (as of this writing) Town Administrator (TA) Brian Domina.

There have been many other transitions in our municipal government that have been lead in whole or in part, by Brian since he started in Whately in 2016. A few that come to mind – the Town Hall renovation project, which brought us the beautiful facility we have today; the water system merger and water filtration projects, which strengthen our access to clean drinking water; the renovations within the former WRMLS building (4 Sandy lane), which helps make our newly acquired space at 4 Sandy lane work better for our boards and committees; successfully advocating for the new assistant TA for community development, which has netted to the town many many times the new salary cost in grants for improvements of all kinds to our town. This is all on top of his top-notch work on the everyday operations of municipal government, often under trying conditions like we saw in 2020. (No, I am not going to use the p-word.)

Brian has been an extremely well-respected and well-liked leader of the team at the town offices. He still is well respected and well liked, but his last day as our town administrator will be March 4.

Everyone who has worked with Brian knows



Don's Plumbing
Service, Remodeling, & Repairs

Donald Barcomb
Fully Licensed & Insured
MA # 31800
215 State Road
Whately, MA 01093
(413) 522-4191



Bay State
PERENNIAL FARM

36 State Road, Whately, MA 413-665-3525
www.baystateperennial.com

that he is thoughtful. I don't just mean he is kind to people, though he is that. I mean that he is deeply thoughtful about the decisions we make and how they will impact our future. Thinking about how our current decisions affect our future options can be tricky, and perhaps there are limits to how much we can really do, but as a selectman I have always been served well by Brian's thoughtfulness in this regard as we try our best to make good decisions today about what's best for our town. We have been very well-served by top-quality town administrators during the times I have served on the Selectboard, and Brian is no exception. We wish Brian the best as he continues and grows his career in the town of Hampden.

In the next 2-3 months we will be searching for a more permanent replacement for Brian, but in the meantime – AGAIN - we find ourselves in a transition!

AND, once again, our town is well served by our current and former town employees. Two former Whately TAs, Lynn Sibley and Patricia Vinchesi are stepping out of retirement temporarily to share the role of interim TA during the very busiest time in the municipal calendar (budget and town meeting season). They will have the support of our awesome 4 Sandy Lane staff and will, as they always do, get the job done, and done well, for Whately.

Are you leaving money on the table?


by Judy Markland

If you're at least 65 and pay property taxes or rent in Massachusetts, you might be.

This year the state essentially doubled the property tax relief available to some seniors via the Senior Circuit Breaker tax credit. If you are 65 or older and pay more than 10% of your income for property taxes and water bills, you may be eligible for an income tax credit of the amount you paid over 10 percent. The maximum credit is \$2590. If you rent, the credit applies to rental payments over 25% of your income. To qualify, you must

- be a Massachusetts resident or part-time resident 65 or older by December 31 of the tax year;
- own or rent property in Mass. as your primary residence;
- have Massachusetts income of no more than \$69,000 for a non-household head, \$86,000 for a head of household, or \$103,000 for a married couples filing a joint return;
- file a Mass income tax return with a schedule CB form attached.

The credit is applied against your Massachusetts income tax payment. If the



Fredrick & Associates

Victoria Fredrick
Certified Public Accountant

(413) 775-3047 | 215 State Road
vfredrick1@verizon.net | Whately, MA 01093

Your Local Neighborhood Realtor



Kristin Vevon, REALTOR, ABR

413.210.3423
KVevon@gmail.com
Chestnut Plain Road, Whately

The Murphys Realtors



S.Y. VENTURES

INSTALL & SERVICE OF: PHONE: 413-626-7435
 *HEATING WEB: syventures.net
 *COOLING EMAIL: Yvnsteve@gmail.com
 *REFRIGERATION
 *TURBO CHEF OVENS FINANCING OPTIONS AVAILABLE

credit exceeds the taxes due, you get a refund for the difference. How cool is that? And if you missed out on the credit in the last three years, you can file returns to make claims for those years too.

Being that taxes are involved, there are a few wrinkles, of course. If your home is owned by a trust, you may be considered a renter rather than a property tax payer. You won't qualify for the credit if you have a Section 8 voucher or live in a government housing authority unit. Rent for assisted living may qualify in some cases.

There is information about the credit on the Mass.gov website at <https://www.mass.gov/info-details/massachusetts-senior-circuit-breaker-tax-credit>. You can also call Community Action Pioneer Valley's Tax Help at 413-376-1136 to make an appointment to discuss your taxes with a volunteer.

Remember, you can't get the credit unless you file a Mass. income tax return - even if you normally don't have to file one. Returns are due by April 17. You can find copies of Schedule CB and its worksheet on line at Mass.gov or at town offices and the Whately library.



Check it out!

Rebecca M. Jones, M.D., LLC.
 Dermatologist
www.drjonesdermatology.com

1-802-251-0958

181 State Road
 Whately, MA 01093

138 Elliot St., Suite One
 Brattleboro, VT 05301

LaSalle Florists & Greenhouses
 Cultivating a tradition since 1934
 a CISA Local Hero farm



Holiday plants and greens,
 fresh cut flowers.

Open 7 days a week in December.

25A LaSalle Drive
 Whately

665-2653
www.LaSalleFlorist.com

Whately Cultural Council wants YOU!

By Rich Korpiewski

The Whately Cultural Council is looking for members of the Whately community 15 years and older with time and interest for choosing what local events happen in our community.

Our Council consists of a member group of enthusiastic and dedicated residents motivated to serving our community and



Massachusetts Cultural Council

providing support for performances and cultural events happening within our town.

The Council is an opportunity to become an active participant in selecting grant applicants and managing and assessing grant funding as well as outreach to potential artisans within the arts and cultural community.

We are looking for interested residents to participate in this process and become an important member of our council and an active voice in saying what cultural programs we want to see in Whately.

Interested individuals can contact Jenny Miriam, heyref4@gmail.com.

Bill's Lawncare Plus
 Landscaping For All Seasons



665-8986
 Bill & Zach Smith

\$10 off every \$50 Mon-Tue-Wed, Whately Residents only



193 Chestnut Plain Road, Whately Center, 413-665-3044

News from the Whately Church

By Cynthia Crosson Harrington

During March we will continue our Lenten presentations with the area churches with this year's theme "A Prescription for Loneliness". On March 6th, Rev. Randy Calvo will be giving a presentation entitled "[Jesus] death was a consequence of what he was doing" at the Whately church. On March 13th Rev. Cynthia Crosson-Harrington will be at the Montague church with a presentation called "Through the Mirror Darkly". The North Hadley church will host a pot luck and discussion of the series on March 20th. All of the presentations begin at 7 pm and all are welcome to join us for what have been popular and well attended events.

Our Easter observance begins on Thursday March 28th with a simple supper (soup and bread) and a Maundy Thursday worship. On Easter, March 31st, we will meet behind the library in Whately for a sunrise service at 6:15 am. Follow us back to the church for an Easter continental breakfast. Our Easter worship - always a highpoint of the Christian year - will be at 10 am. We hope that you will join us.

We worship each Sunday at 10 am and invite you to drop in to be welcomed by our friendly and inviting community of faith. Until mid-march, we enjoy the warmth of the parish hall but return to the upstairs (accessible) sanctuary for Palm Sunday and



the Easter celebration.

Transfer Station news

By Fran Fortino

The Whately transfer station is the best place for town residents to compost and recycle as much of their disposable waste as ever. We will hold 2 bulky waste collections this spring and fall. A hazardous waste collection will occur in Sept. For all events and options, see the **transfer station calendar** insert in this Scoop.

Help wanted: We are urgently looking for a part-time transfer station attendant for Saturday 7-5 and Tuesday 12-5 shifts to join our crew there. We will train anyone interested. Please call 665-4561 for more information.

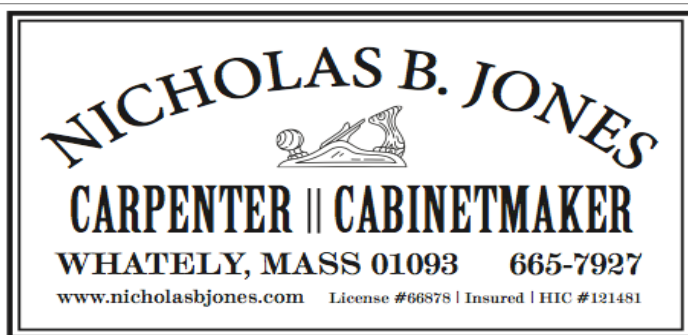


News from the Town Clerk's Office

Amy E. Lavallee

Elections

The 2024 Election cycle has begun! Our first election will be the Presidential Primaries on March 5, 2024. Early Voting will be at the



Town Offices, 4 Sandy Lane. Election Day voting will be at the Town Hall, 194 Chestnut Plain Road.

Voter Registrations due by Saturday, February 24. The Town Clerk's office will be open 9am-11am & 3pm-5pm for residents to register.

Early In Person Voting will be held at the **Town Offices**, 4 Sandy Lane from Saturday February 24-Friday March 1. The office will be open for voting on Saturday February 24 9am-11am & 3pm-5pm, Monday February 26 12pm-4pm, Tuesday-Friday 9am-12pm.

Election Day- Voting Day will be held at the **Town Hall**, 194 Chestnut Plain Road, from 7am-8pm.

Vote by Mail Applications- Due to the Town Clerk by Tuesday February 27 at 5pm

Vote by Mail Ballots- Are due to the Town Clerk by Monday March 4 at 5pm

Nomination Papers are now available for the June 11th Local Town Election.

Positions up for election this year are;

Selectboard – 3 year term,

Assessor-2 year term,

Assessor – 3 year term,

Board of Health – 3 year term,

School Committee – 3 year term,

2 Library Trustee – 3 year terms,

2 Library Trustee-2 year term,

Cemetery Commissioner – 3year term,

Water Commissioner – 3 year term,

Moderator - 1 year term,

Elector to the Will of Oliver Smith – 1 year term

Frontier Regional School District Committee – 3 year term

If you are interested in running for office in the June 11th election, please contact Amy Lavalley, Town Clerk at 665-4400 ext.3. Nomination papers will be available until April 19, 2024. Nomination Papers must be returned with 20 valid signatures to the Registrars of Voters (Town Clerk's Office) by April 23, 2024.

Offering the best in acoustic music of all types
Now in our 19th year!



Summer schedule now posted
www.watermelonwednesdays.com

Dog Licenses – This is a reminder that dog licenses need to be obtained by June 1, 2024. If your dog is not licensed by June 1st a late fee of \$50 will be applied to each dog.

There are 4 ways to license your dog(s):

*If a current rabies certificate is on file:

- Online: www.whately.org - go to Pay bills
- Drop-box: Located in the parking lot outside of the Whately Town Offices
- In Person: Cash, check, and/or credit/debit. Checks - payable to the Town of Whately
- By Mail: Please make check payable to the Town of Whately for the correct amount.
- Fees are: Spayed females and neutered males \$10.00 each
- Unaltered females and males \$15.00 each

Census forms were mailed at the end of December. If you have not already done so, please return them to the Town Clerk's Office, 4 Sandy Lane, So. Deerfield, MA 01373. If you never received a form, please call the Town Clerk's office at 665-4400 Option 3.





The WHATELY SCOOP

Certified News for the Town
with the Milk Bottle...

152 Westbrook Road
RFD So. Deerfield, Ma. 01373

PRSRT STD
US Postage Paid
Northampton Ma
Permit no. 801

Whately Postal Customer Whately, Ma. 01093

Winter ebbs, days grow longer,
Down below us, life grows stronger

Birds will soon call for a mate
And hope they don't have long to wait

Soon tree frogs will be singing out
And larva crawling all about

For life's upon us, one and all
We can't refuse to heed its call!

Warming days and still-cool nights
Make sap rise up to untold heights

The Whately Scoop

*Cost for printing and mailing the Scoop was provided by
the businesses who placed ads within. Please patronize our local businesses!*

If you misplace your copy of The Scoop, do not despair! You can always find it on the resources page at www.whatelyhistorical.org.

The closing date for submissions to the May 2024 issue of the Scoop is **Sunday May 12.**

Please email your our literary contributions to jpfortune@comcast.net before that deadline. Also use this email if you want to be on the reminder list and get an email from me about 3-4 weeks before the deadline, or if you would like email delivery of the scoop.

Business card sized ads are \$100 for 1 year (four issues) and a mention in a box on the front page is \$50/year. Please make checks out to: The Whately Scoop and mail to 152

Westbrook Rd RFD So. Deerfield, 01373

Like the Scoop? Want to see it continue?
Here's what you can do:

- 1) Volunteer to write articles
- 2) Volunteer to help prep the scoop for mailing
- 3) Volunteer to help on mailing day
- 4) Ask your favorite local businesses to place an ad
- 5) Make a donation to help us cover costs

If you are interested in any of those please call or email Joyce at 665-6739; jpfortune@comcast.net.