

News from the

# WHATELY HISTORICAL SOCIETY

[www.whatelyhistorical.org](http://www.whatelyhistorical.org)

[info@whatelyhistorical.org](mailto:info@whatelyhistorical.org)

In Town Hall, 194 Chestnut Plain Road,  
Whately, MA 01093 • December 2023

Photo: Anne Stefanic Morton with her dogs  
in West Whately, 1934. (WHS 2022.174.005)



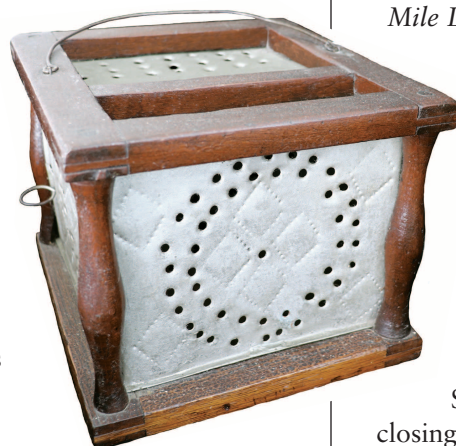
world—their hats were worn by 23 U.S. presidents, including Abraham Lincoln. The fabric on the outside of this hat is dyed deep black, with a moiré silk lining and grosgrain ribbon trim. It was donated by Beverly Dwight, Albert Graves' great-granddaughter, on behalf of the Dwight family.

**RECENT ACQUISITIONS** • Rose Mary and Robert Badovinac of Northglenn, CO, tracked down the Whately Historical Society to donate a **scrapbook** (WHS 2023.158.001) assembled by William H. Brown (1866–1924), a well-known silent film actor. His Whately parents were Henry Augustus Brown (1837–1913) and Caroline Belden (1838–1915). Henry Brown attained the highest military rank of any Whately soldier who served in the Union Army, and the scrapbook contains memorials to

him and Caroline Belden Brown, as well as an intact Whately Centennial Programme of July 4, 1871.



A primitive antique **foot warmer**, which probably dates to the 1820s, would have been used by travelers in horse-drawn wagons. Its wood frame and turned balustrade-style supports are constructed with mortise and tenon, and its decorated punched-tin sides allowed heat to filter through from the tin bucket inside, which would have been stoked with hot coals. The handle and door latch are simple wire devices. Donated by Judy Markland, the foot warmer was found in the attic of 106 North Street. (WHS 2023.019.001)



**Top hats** were the mark of elegance in the 19th and early 20th centuries, and this example, made around 1910, belonged to Albert Ernest Graves (1863–1932). The hat (WHS 2023.136.001) was made by the Knox Hat Company at 216 Broadway in Lower Manhattan, which was in business from 1838 to 1932. Knox's Brooklyn factory was the largest hat factory in the

## SAVE THE DATE • Sunday, May 26, 2024 •

The Historical Society's spring festival will begin immediately after the Memorial Day ceremony in Town Center. The program will include music by *Seven Mile Line*; activities about

insects led by Micky McKinley of the

Hitchcock Center for the Environment; a basket-weaving demonstration by Laurie Smith; food and drink by Tom's Long Hot Dogs—and, of course, free ice cream. Join us!



## WINTER BREAK •

The Museum will be closed between December 17 and January 9, but otherwise open Tuesdays, 9–noon, and on Saturday, December 16, 10–12 noon for the closing of our *Roaring Brook* exhibit. If you'd like to visit the Museum at another time, please write to us at [info@whatelyhistorical.org](mailto:info@whatelyhistorical.org). We'll resume opening on some Saturday mornings when our *Childhood* exhibit is up and running next spring.

**Check out Whately Historical Society on Facebook!**

## WHS Goes Digital!

The Historical Society joined over 200 other museums, libraries and archives this year by sending 1,200 items from its collection to Digital Commonwealth, a public access inventory of historical materials managed by the Boston Public Library. Now anyone with access to the internet can search this store of Whately photographs, postcards, and other printed material (including the image on this newsletter's masthead) by going to [www.digitalcommonwealth.org](http://www.digitalcommonwealth.org) and typing *Whately Historical Society* in the search bar.

In Phase Two of our digitization project, we will send a full set of annual Town reports to be scanned by Digital Commonwealth. They'll be ready for public access in the spring of 2024.

## Trolleys, Tracks and Troubles: 1903-1924

Plans to extend trolley service through Whately in 1901 nearly foundered as a dispute arose about whether the new electric railroad from Northampton to Greenfield should follow a south-north route along River Road or go through Whately Center en route to Deerfield. Stop by the Historical Society Museum in Town Hall to see our small exhibit about the trolley route and disputes, designed in collaboration with the Greenfield and

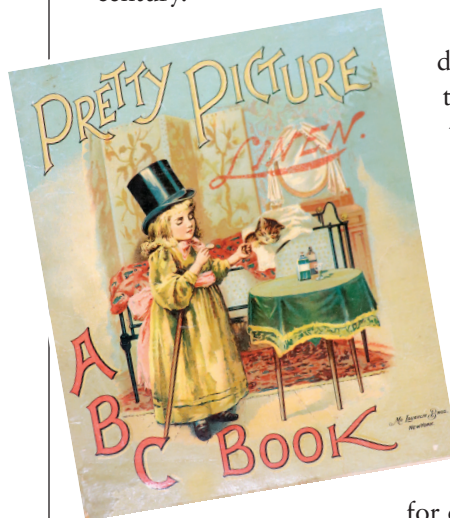


WHS 2023.069.001

Hatfield Historical Societies and Historic Deerfield, as part of the History on the Go! Program of the Pioneer Valley History Network.

## Childhood in Whately • 2024 Exhibit Plans

How did Whately kids work, play, and learn in times past? Our 2024 exhibit, to open next spring, will focus on childhood in Whately from the late 18th to mid-20th century.



*Pretty Picture ABC*, 1899  
WHS 2015.046.001

If you have letters, diaries, report cards, photographs, games, or toys that you'd be willing to loan us, let us know! We're happy to scan works on paper and return them to you in digital format with the originals.

We're also looking for Town residents who worked on Whately farms or for other local businesses as children or teenagers, so we can tell their stories. Email [info@whatelyhistorical.org](mailto:info@whatelyhistorical.org) or drop by the Museum in Town Hall on a Tuesday morning, 9 am–12 noon.

## Support the Historical Society

**Offer Materials** • We're always looking for items that illustrate the past and complement our holdings. Call for an appointment to bring materials to Town Hall. Our archivist and curator will review all offers to decide which to add to the collection.

**Volunteer** • We always need help maintaining and documenting the collection, social media, and planning and supporting events. Call Adelia at 665-3837 or email [info@whatelyhistorical.org](mailto:info@whatelyhistorical.org).

**Contribute & Become a Member** • Join others who care about the history of our town! Receive notices about all public programs and invitations to special activities. Donations to support our work of preservation, documentation and expansion of our museum collection are tax-deductible to the extent allowed by law. Individual donors of at least \$10 become one-year members; higher annual contributions are encouraged: Supporter \$40, Sponsor \$75, Patron \$150. Donors of \$500 or more become five-year members. Make your check out to: *Whately Historical Society*. Send it with name, address, phone number and email address to Whately Historical Society, P.O. Box 7, Whately, MA 01093. You may also pay with a credit card or via PayPal at [www.whatelyhistorical.org](http://www.whatelyhistorical.org).

The Whately Historical Society was founded in 1966 to preserve the town's history and to educate townspeople and others about Whately's past. The Society sponsors programs, research and activities about the history and culture of Whately and the region; maintains a museum of Whately documents, images and objects; and responds to inquiries about Whately history and genealogy.

The Whately Historical Society is incorporated as a charitable organization in the Commonwealth of Mass. and has been designated as a 501(c)(3) charitable organization by the IRS.

Explore [www.whatelyhistorical.org](http://www.whatelyhistorical.org) to learn more about our collections, access resources about Whately history, learn about future events, and purchase Town histories, historic postcards and note cards, T-shirts, or sweatshirts.

### Officers

Neal Abraham, President  
Adelia Bardwell, Immediate Past President  
Larry Ashman, Vice President  
Sara Cooper, Treasurer  
Gretchen Bechta, Secretary  
Dereka Smith, Archivist  
Jane Grybko, Curator  
Maida Goodwin, Webmaster