

Whately Transfer Station Calendar

- 2023 -

Please note: only trash in Town of Whately bags or with Whately stickers will be accepted. Buy them at the transfer station. They are the most affordable trash disposal option in town!

*** Spring Bulky Waste Collection day – May 13.** We hope to resume bulky waste collection in May, if we can do so safely. Along with the Franklin County Solid Waste Management District, we'll weigh Covid risk levels later this spring. Please check the Transfer Station page on the Whately Town website for future updates.

Brush Chipping – May 6 & June 3 only, 8 a.m.-Noon. Bring brush up to 6" in diameter, free of nails & dirt. NO leaves, grass, or construction debris. Landscaping chips available.

Batteries—rechargeable and non-rechargeable. **Also, cell phones & batteries; laptop, camera and power tool batteries.** See attendant for details.

Books, etc. Drop off any books, (hard and softcover) free—into the Books drop off box.

Clean, dry clothing & clean worn, torn or tattered rags, etc. – Drop in Salvation Army box *in bags please*, e.g., socks, shoes, gloves; belts, ties, bras & purses; linens -curtains, pillows, comforters, sheets, towels and stuffed animals...

Compost—Drop food waste, etc. in the container next to the book box and **save money** on trash costs!

Fluorescent lights/bulbs —Free drop off and see attendant for details. NO broken bulbs please!

Plastic Bags - All types, must be clean, dry and have no paper inside or sticky labels (tear them off even if bag rips). Drop into plastic bag bin. See attendant for details.

Rx prescription and over-the-counter medicines – Securely dispose old Rx pills, tablets, vitamins, and veterinary medications **-no liquids please or chemotherapy drugs-** in the drop box in the lobby of Whately Police Dept. from **8 a.m.-8 p.m. daily**.

Sharps Collection – Dispose of needles for personal health, get free collection boxes at (and return to): Whately Health Center, 181 State Rd., **Tuesdays, 9-2 only. Disposal also at Whately Police Dept. daily.**

Swap Shed – Tuesdays p.m. & Saturdays. **Wear a mask inside for now. PLEASE** consider our staff and other residents, don't bring junk or TV's! All items should be in **working condition & re-usable**. Bring clean, useful household items, sporting goods, and small toys, etc. NO exercise or computer equipment. Take items you can use free.

Thermometers —ONLY mercury-filled thermometers. See attendant.

*** Hazardous Waste Collection day, Sept. 23 -** at Greenfield Community College. Bring toxic materials like motor oil, pesticides and solvents, etc. Pre-registration required, call 772-2438.

*** Fall Bulky Waste Collection Day – Oct. 21.** See above spring bulky waste collection info.

For old furniture, stoves, freezers & refrigerators—*doors must be removed first*, mowers, BBQ tanks, computers, monitors and TV's, furniture, metal items, air conditioners, bicycles, bulky plastic items, beds, radios, tires & more. Fees charged for most items to cover costs. See attendant for prices.

After the holidays, bring real Christmas trees for chipping. More recycling information over →→

- Remember to recycle! PUT THIS CALENDAR ON YOUR REFRIGERATOR -

In 2022, Whately residents saved \$1,000's by composting & recycling over 40% of our waste at the transfer station. Thank you all for doing your part! —**Whately Solid Waste Management Committee**



WHAT CAN GO IN THE WHATELY RECYCLING BOXES?

YES -Please empty and rinse all container items		NO – but several items below have other recycling options*		
Aluminum: Please clean first!		Siding		
<ul style="list-style-type: none"> ➤ Cans, aluminum foil ➤ pie pans, aluminum trays 		scrap metal foil-wrapped beverage pouches (ex. Capri Sun, squeezable baby food) pots & pans, utensils, tools, etc.		
Metal cans: Please clean first!		hangers	car parts, pipes, fuel tanks, etc.	appliances toys
<ul style="list-style-type: none"> ➤ food and beverage cans (metal lids OK) ➤ pet food, soup cans (metal lids OK) 		scrap metal Pots & pans paint cans	No aerosol spray cans	
Glass: Labels do not need to be removed.		Ceramics, baking dishes, dishware		light bulbs* (see fluorescent lights below)
<ul style="list-style-type: none"> ➤ food and beverage bottles and jars 		drinking glasses, vases canning jars broken glass	cookware (Pyrex) coffee mugs medicine bottles plate glass	glass art windows mirrors eye glasses
Plastics: Smaller than 2.5 gallons ONLY. Please Flatten, if you can.		All styrofoam (polystyrene)		No bottles that contained motor oil, anti-freeze, pesticides, pool chemicals or other hazardous stuff
<ul style="list-style-type: none"> ➤ food containers: margarine, yogurt, cooking oil, condiments, beverage bottles and jugs: soda, water, juice, milk ➤ detergent, soap and hand sanitizer bottles ➤ personal care bottles: shampoo, conditioner, etc. ➤ clear plastic clamshells (no black or Styrofoam) ➤ clear plastic egg cartons and clear plastic ups 		Take-out food containers and utensils, straws, plates plastic wrap/sheeting cookie trays liners from food packaging cellophane food bags (e.g., pasta, candy bars, cookies) frozen food bags/pouches meat trays	medicine & pill bottles “packing” peanuts or foam or blister pack packaging clothes baskets* toys*(see swap shed) flower pots* black plastic or tarps 5-gallon pails; buckets VCR, CD cases	curbside/other plastic bins* indoor/outdoor/patio furniture* swimming pools*, tarps, hoses*, PVC piping or tubing* containers bigger than 2.5 gals*; nalgene water bottles wine corks
Cartons: Recycle with containers, not paper. NO straws.		foil-wrapped pouches (ex. Capri Sun)		plastic straws
<ul style="list-style-type: none"> ➤ milk and juice cartons (plastic spout and cap OK) ➤ soymilk, soup and drink boxes (remove straws) 		frozen juice cartons frozen food packaging		
Paper: Clean paper and cardboard only-Flatten all boxes.		soda, beer cartons frozen juice or ice cream cartons take-out containers paper towels, napkins** egg cartons** pizza with food/food boxes** (** put these 3 items in food compost bins)		glossy boxes that show white strands when torn (frozen food boxes) blueprints dirtied paper (pet waste, paint) copy paper wrappers
Other* (ask attendant first)				
<ul style="list-style-type: none"> ➤ Plastic bags (Clean, dry, empty and no stickers) ➤ Household batteries (separate different types) ➤ All fluorescent lights (separate different types) ➤ All books, telephone books, etc. (see other side for details) 				
		<p>* Several of the above items in the ‘No’ column can be disposed of on bulky waste collection days (see recycling calendar) or in the food waste composting container at the bottom of the transfer station ramp, or in bulky plastic container.</p> <p>-ask attendant for details.</p>		

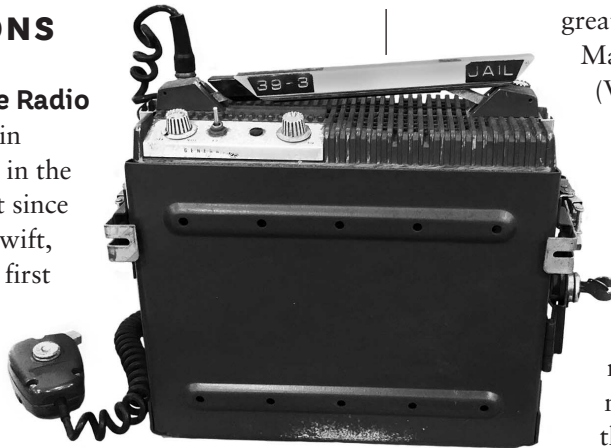
News from the

WHATELY HISTORICAL SOCIETY

NEW ACQUISITIONS

A GE Porta-Mobile Police Radio

donated by Constable Edwin Zaniewski, who has served in the Whately Police Department since 1987. Used by Harold R. Swift, Jr. (1937–2019), Whately's first Police Chief, in the 1970s, the radio enabled communications between Whately and the State Police, as well as the Franklin County Jail, at a time when Whately had no communications system of its own. (WHS 2023.020.001)



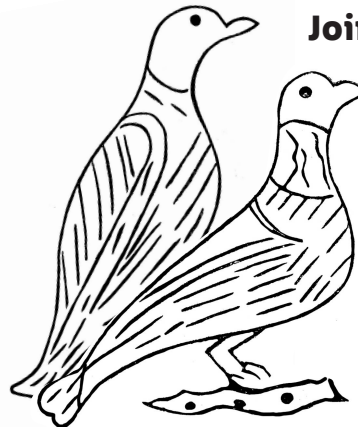
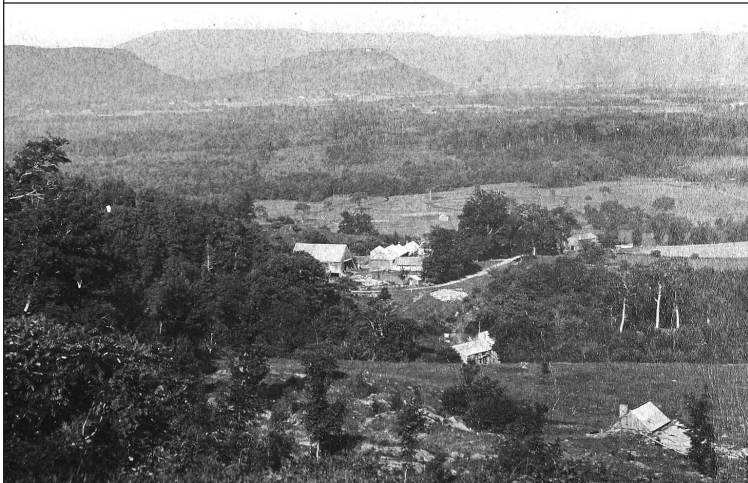
Three Whately photographs by Hatfield photographer Lewis Kingsley (1853–1924), brother of the Hadley artist Elbridge Kingsley and Whately resident Stephen Kingsley (1847–1932). These beautiful prints depict views of the Mill River valley (below), Chestnut Plain Road in the town center (above), and the road north beyond the Sanderson homestead on North Street. Stephen Kingsley was the second husband of Mary Elizabeth Graves Roote (1849–1943) of Whately. Her great-

great-grandchildren, Bill, Judy and Shirley Markland, donated the photographs. (WHS 2023.038.001/2/3)

Nasami Farm road sign that directed customers to the nursery on North Street begun in 1983 by Robert

August on land formerly part of Roaring Brook Farm. Nasami sold Christmas trees in the winter and ornamental trees and shrubs in the warmer months, and developed a reputation in the area for its selection and quality. In

2003, August sold the business to the New England Wildflower Society, now Native Plant Trust. This sign was donated by Nancy August and family. (WHS.2023.052.001)



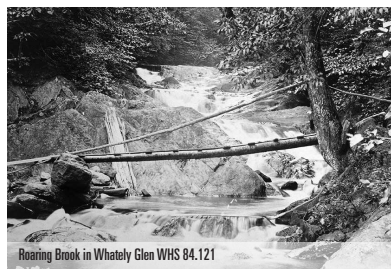
Join us on Facebook

Check out the new Whately Historical Society Facebook page by clicking on the Facebook link at the bottom of the WHS homepage—
whatelyhistorical.org.

UPCOMING EVENTS

The Kingsley Brothers: Artists in Whately Glen Talk · Thursday, March 16, 7 pm · Town Hall Auditorium

Elbridge and Lewis Kingsley grew up in Hatfield in the mid-1800s and created an impressive portfolio of photography, illustrations, and paintings of the Valley—including images of Roaring Brook and Whately Glen. Elbridge achieved world fame for his wood engravings and recruited leading artists to join him in Whately to work from nature. Speakers Allison W. Bell and Maida Goodwin are co-curators of the *Roaring Brook* exhibit and authors of *Glorious Mountain Days: The 1902 hike that helped save the White Mountains* (2019). This talk is in conjunction with the WHS *Roaring Brook* exhibit and sponsored jointly by WHS and the Hatfield Historical Society.



New! Roaring Brook exhibit explores natural history, industry, recreation and tourism, and other aspects of this much-loved but

little-known area of the town. Opening to the public on Thursday, March 16. Open: Tuesdays 9 am–noon; first and third Saturdays of each month, 10 am–noon; and during the WHS festivals, Sundays May 28 and Oct. 3.

A Whately Sampler

Sunday, April 23, 4 pm, Town Hall Auditorium

This three-part presentation includes:

- The story of Whately-born **brothers George, Albert and Homer Bartlett**, all born in the 1840s, who established a renowned building firm in North Adams. They built the Hampshire County Courthouse, Trinity Church in Shelburne Falls, and other notable structures across western Massachusetts.
- Richard Colton, retired National Park historian from the Springfield Armory, will discuss Asher Bartlett's 1813 **flintlock musket**, made for the Massachusetts militia, and other muskets from his private collection.
- A introduction to using **Hidden History**, the digital map of Whately developed by the Historical Commission for the Town's 250th. Learn how to explore the locations and markers of the Town's boundaries; the many taverns in early Whately; and lesser-known aspects of the town's history.

Spring Festival · Local music and food, plus fun workshops on historic woodworking and pollinators · **Sunday, May 28, noon–3 pm, Town Hall lawn**



Support the Historical Society

Offer Materials · We're always looking for items that illustrate the past and complement our holdings. Call for an appointment to bring materials to Town Hall. Our archivist and curator will review all offers to decide which to add to the collection.

Volunteer · We always need help maintaining and documenting the collection, social media, and planning and supporting events. Call Adelia at 665-3837 or email info@whatelyhistorical.org.

Contribute & Become a Member · Join others who care about the history of our town! Receive notices about all public programs and invitations to special activities. Donations to support our work of preservation, documentation and expansion of our museum collection are tax-deductible to the extent allowed by law. Individual donors of at least \$10 become one-year members; higher annual contributions are encouraged: Supporter \$40, Sponsor \$75, Patron \$150. Donors of \$500 or more become five-year members. Make your check out to: *Whately Historical Society*. Send it with name, address, phone number and email address to Whately Historical Society, P.O. Box 7, Whately, MA 01093. You may also pay with a credit card or via PayPal at www.whatelyhistorical.org.

The Whately Historical Society was founded in 1966 to preserve the town's history and to educate townspeople and others about Whately's past. The Society sponsors programs, research and activities about the history and culture of Whately and the region; maintains a museum of Whately documents, images and objects; and responds to inquiries about Whately history and genealogy.

The Whately Historical Society is incorporated as a charitable organization in the Commonwealth of Mass. and has been designated as a 501(c)(3) charitable organization by the IRS.

Explore www.whatelyhistorical.org to learn more about our collections, access resources about Whately history, learn about future events, and purchase Town histories, historic postcards and note cards, T-shirts, or sweatshirts.

Officers

Neal Abraham, President
Adelia Bardwell, Immediate Past President
Larry Ashman, Vice President
Bill Saunders, Treasurer
Gretchen Bechta, Secretary
Dereka Smith, Archivist
Jane Grybko, Curator
Maida Goodwin, Webmaster



The WHATELY SCOOP

Certified News for the Town
with the Milk Bottle...

Volume 20 ❖ Number 3 ❖ Mar 2023 ❖ Whately, Massachusetts

The Fun of Whately's 250th Anniversary Celebration Lives On

By Susan Barron, former co-chair of Whately 250th committee.

FCAT has compiled an amazing video of all the events for Whately's 250th Anniversary celebration, which is available on YouTube at: <https://youtu.be/iRlXoivGSY0>. Look for yourself and your family and relive the fun.

250th Anniversary tee-shirts, Yankee Candles, and etched milk bottles are still available. These items will be for sale at the Whately Historical Society Spring Festival on Sunday, May 28.

Whately Roadside Clean-up

By Montserrat Archbald

Would you like to spend a spring morning taking care of beautiful Whately with your friendly neighbors? Join us for three fun hours of picking up roadside trash on Saturday, April 29. Meet at the old Town Hall at 9 am. Bring bags to re-use if you have them (feed/seed/pellet bags work well), gloves, and your own water bottle. Dress for getting dirty. We'll have lots of trash bags and a truck for the final haul. Questions? Call or text Becky Jones (413-387-7746) or Montserrat Archbald (413-559-9998).

A Message from Valley Neighbors: Seeking Volunteers!

By Deb Carney

Valley Neighbors, our home-grown local non-profit, offers volunteer help to residents over 60 in Whately, Deerfield and Sunderland.

Our members can get rides to medical

appointments, stores, and other destinations; help with household chores; phone checks and companionship; and other services at no cost.

Our volunteers enjoy giving back to their communities!

We need more volunteers willing to help their neighbors. All our volunteers receive training and support, including supplemental insurance coverage.

To learn more, please Email us at info@ValleyNeighbors.org or visit our website: www.ValleyNeighbors.org or call 413-453-9057 and leave us a message

From the Town Moderator

by Nat Fortune

One of the tasks of the town moderator is to appoint new members to the planning board and finance committee as openings occur. Some of our town's longest serving members on the planning board plan to retire as their terms expire over the next couple of years. If you are interested in stepping up to serve the town on one of these committees, I encourage you to get in touch with the committee chair / members to discuss what is required and why they find it rewarding, then drop me a line (nfortune@protonmail.com or 413-665-6739) to let me know you'd like to be considered for the position. Thank you for your interest!


Watts up!

By Paul Newlin, Energy Committee Chair

This article is from your Whately Energy Committee about what you can do to save energy dollars, increase, comfort, and reduce global warming.

In this column, we suggest two measures:

LaSalle Florists & Greenhouses
Cultivating a tradition since 1934
a CISA Local Hero farm



Calla lilies fresh from the
greenhouse and freesias soon.


23 LaSalle Drive 665-2653
Whately www.LaSalleFlorist.com

1. Fill out the solar survey that will arrive in your mailbox later this month. The UMass Energy Extension group is helping towns, including Whately, estimate our potential for generating electricity using photo-voltaic (PV) systems. PV technology is a proven and cost-effective way to reduce our dependence on more expensive and environmentally damaging sources of energy such as coal, oil, and natural gas. We are also aware that PV arrays have their own impact, especially with regard to land use and aesthetics. That said, the survey will help us weigh the costs and benefits of adding more PV generation in our town. In order to best calculate those costs/benefits, we need your input.

2. Consider installing a heat pump in order to save money, provide cooling as well as heating, and to reduce your carbon footprint. Significant cost reducing incentives are now in place to make changing or supplementing your heating system economically advantageous. Heat pumps are now a proven and improved technology. According to a recent article in [MIT's Technology Review](#), many heat pumps are now able to provide heating even in our cold New England climate. Heat pumps provide heating for between 40-60% of homes in Norway, Finland, and Sweden.

Heat pumps also provide cooling in the summer. They can be 300-400% efficient, meaning they provide that much more heating energy than the electric energy used to operate them.

According to the MIT article "Up-front costs for heat pumps are a major barrier to adoption: purchasing and installing a single unit today can cost between [\\$3,000 and \\$6,000](#), and larger homes often require [multiple units](#), but over their lifetime of about 15 years, heat pumps are already cheaper to buy and operate than other systems for some consumers, especially if they're used to both heat and cool a home during different times of

NICHOLAS B. JONES

CARPENTER || CABINETMAKER
WHATELY, MASS 01093 665-7927
www.nicholasbjones.com License #66878 | Insured | HIC #121481

the year. In addition, the Inflation Reduction Act offers a 30% tax credit on the purchase price of a heat pump, with additional rebates for low- and moderate-income households. For some households, the funding could cover 100% of the cost. Rewiring America [has a calculator](#) to help people determine what IRA subsidies they qualify for.

News from the Whately Church

By Rev. Cynthia Harrington

March brings us into our observance of the Lenten season at the Whately church and with it our weekly Lenten series entitled "On the Outside Looking In". On March 8, Rev. Sherril Willis will be speaking on African -American story-telling at the Sunderland church. On March 15 the Whately church will be hosting Rev. Marianne MacCullagh, the new pastor of the Conway and Shelburne churches, talking about "Stigma". The remaining presentations will be on March 22 by Rev. Randy Calvo at the Shelburne church and Re. James Koyama at the North Hadley church. All of the presentations begin at 7 pm and all are welcome to join us for what have been popular and well attended events.

Our Easter observance begins on Thursday April 6th with a simple supper (soup and bread) and a Maundy Thursday worship. On Easter, April 9st, we will meet behind the library in Whately for a sunrise service at 6:00 am. Follow us back to the church for an Easter

Fredrick & Associates

Victoria Fredrick
Certified Public Accountant

(413)775-3047 | 215 State Road
vfredrick1@verizon.net | Whately, MA 01093



S.Y. VENTURES

INSTALL & SERVICE OF:
 *HEATING
 *COOLING
 *REFRIGERATION
 *TURBO CHEF OVENS

PHONE: 413-626-7435
 WEB: syventures.net
 EMAIL: Yvnsteve@gmail.com

FINANCING OPTIONS AVAILABLE

continental breakfast. Our Easter worship—always a highpoint of the Christian year-- will be at 10 am. We hope that you will join us.

We worship each Sunday at 10 am and invite you to drop in to be welcomed by our friendly and inviting community of faith. Until mid-march, we enjoy the warmth of the parish hall but return to the upstairs (accessible) sanctuary from the remainder of Lent and the Easter celebration. Join us in April to see our newly renovated windows, thanks in part to the generosity of a town grant.

News from the Whately Library

By Cyndi Steiner, Director

Happy Spring from all of us here at the Whately Public Library.

Join Julie Cavacco on Mondays from 10-11:30 for the **Craft Circle for Seniors**. Bring your own craft supplies or use our craft supplies to get creative. Or just come to visit! Bring a friend- make a friend.

March is Mending Month. On **Tuesdays in March** at 6:30 join your fellow menders Curious about mending stop by to learn how.

Are you interested in Friending the library? We are looking to grow and expand our Friends Group. For more information please contact the library.

Second Saturday Story time 11AM Join us for our monthly Story time, every second

Saturday of the month. (except July & August)

We will be closed on Monday April 17 Patriots Day Monday May 29 Memorial Day

Please check our website library@whately.org or our Facebook Page for updates and upcoming events.

Greater Whately Snowmobile Club Celebrates 50 Years

Finally some snow! Although it would be memorable, "The year that we didn't get any snow to ride on" is not how the Greater Whately Snowmobile Club wanted to celebrate our 50th anniversary as a club. Riding on the snowy trails is what it's been all about for our club for the last 50 years. From the woods up on Mount Esther, to the edges of the farm fields along the Connecticut River, and all the places in between.

The first patented snowmobile in the United States was a conversion kit with skis and tracks installed onto a Ford Model T. The modern snowmobile as we know it today was invented in the 1950's by a company that would become Polaris Industries, which is a leader in the snowmobile industry to this day. The 1960's brought many manufacturers into the industry, and by the early 1970's hundreds of thousands of snowmobiles were being sold each year.

With the popularity growing locally, the Greater Whately Snowmobile Club was officially founded in 1973. The first group of snowmobilers in town had to create a trail system. Clearing old logging roads, cutting new trails through the woods, and plotting course through farm fields created our trail network. Many of our current trails are in fact the original ones established 50 years ago. We've also added some new ones and made changes to accommodate development and changes in the natural landscape.

Back in the early days of the club, many of the snowmobiles around here were bought



Bill's Lawncare Plus
 Landscaping For All Seasons

665-8986
 Bill & Zach Smith



Mountain View
 Power Equipment Service
 Gary Grybko
 413-834-2872

302 Long Plain Road
 Whately, Ma. 01373
grybkog@gmail.com

from "S and S Ski-Doo Sales and Service" on Chestnut Plain Road in Hatfield. It was illegal to ride a snowmobile across the street before state and local regulations were developed for the new activity. To avoid a hassle, local riders would try to stay concealed when approaching a road to sneak across without being seen. Conversely, during Whately's bicentennial celebration, snowmobile races held at the town garage were very popular. Last year during for Whately's 250th celebration parade, the club had a float in the parade and a snowmobile driving around on wheels.

We are fortunate to have such a great trail network here in Whately for snowmobiling, many of which are utilized for other recreational activities during the rest of the year. Our dedicated club members spend countless hours each year clearing and maintaining trails, placing trail markers and signs, and communicating with property owners to ensure that our trails are ready for the season. We can't thank all of our neighbors enough for your continued support in allowing the trails to continue to operate on your properties.

We are proud to have been a part of this community for 50 years now and look forward to the next 50 years

Spring Transfer Station News

By Fran Fortino, Solid Waste Mgmt. Com.

The Whately transfer station is now open for town residents to compost or recycle as much of their disposable waste as ever. We will hold 2 bulky waste collections this spring and fall. A hazardous waste collection will occur in Sept. For all the events and options, see the **transfer station calendar** insert in this Scoop.

We are looking for part-time transfer station attendants for Saturday and Tuesday shifts to complement our crew there. We will train anyone interested. Please call 665-4561 for more information.



**Watermelon
Wednesdays**
in West Whately

Celebrating 20 Years of the Finest Acoustic Music

www.watermelonwednesdays.com

Your Local Neighborhood Realtor



Kristin Vevon, REALTOR, ABR

413.210.3423
KVevon@gmail.com
Chestnut Plain Road, Whately

The Murphys Realtors

Town Administrator Updates Spring '23

By Brian Domina, Town Administrator

Goodbye and hello to long time Town Clerk and Treasurer-Collector Lynn Sibley. Lynn officially retired from the Town of Whately on February 28, 2023 and to the surprise of no one Lynn is returning to the Town in the part-time Assistant Treasurer-Collector role. Current Town Clerk Amy Schrader will be pulling double duty as Town Clerk and Treasurer-Collector with Administrative Assistant Amy Lavallee pulling double duty as Assistant Town Clerk and Administrative Assistant. So, while the roles have changed you'll still see the same smiling faces at the Town Offices next time you stop in.

In other staffing news, Community Development Administrator Hannah Davis left in mid-January to accept a Grant Writer position with the City of Somerville. We hope to have a replacement for Hannah hired within the next few weeks so work can continue uninterrupted on a number of important projects.

With the weather beginning to warm a number of infrastructure projects will soon be starting. Work will begin shortly on the accessibility improvements to the restrooms and the driveway/parking lot at Herlihy Field. Within the next few months, work will begin on extending the sidewalks along the east side of Chestnut Plain Road between the Town



NATHAN SMITH
Electrical Contractor

413 774 0096

\$10 off every \$50 Mon-Tue-Wed, Whately Residents only



193 Chestnut Plain Road, Whately Center, 413-665-3044

Hall and the Congregational Church, as well as intersection safety improvements in West Whately. One of the most visible projects starting in the near future will be the installation of a solar photovoltaic array with battery storage on the roof of the Town Offices to help reduce the Town's electricity costs.

Town staff and consultants are also working on a number of projects that are not so visible, but equally important. Engineering and design work is being done to extend the water main on Egypt Road and to replace the culvert on Christian Lane between State Road and the Fire Station. On-going planning studies are focused on economic development around Exit 35 (I-91), the development of a Housing Production Plan, updates to the Town's Master Plan, and a Climate Resiliency Plan. Other less interesting projects are revisions to the Town's personnel policies and codification of the Town's General Bylaws.

Items on our radar for the future are the extension of the municipal electric aggregation program, a highway garage feasibility, finding an appropriate and productive reuse for the Center School and exploring funding for the design and construction of a new bridge over the Mill River on Christian Lane.

As always please feel free to email (townadmin@whately.org) or stop by the Town Offices my door is always open.

Town Clerk News

Amy M. Schrader

Nomination Papers are available for the June 13th Town Election. Positions up for election this year are Selectboard - 3-year term, Assessor - 3-year term, Board of Health - 3-year term, School Committee - 3-year term, Two Library Trustee Positions - 3-year terms, Cemetery Commissioner - 3-year term, Water Commissioner - 3-year term, Moderator - 1 year term, Elector to the Will of

Oliver Smith - 1 year term. If you are interested in running for office in the June 13th election, please contact Amy M. Schrader, Town Clerk at 665-4400 ext.3. Nomination papers will be available until April 20, 2023. Nomination Papers must be returned with 20 valid signatures to the Registrars of Voters (Town Clerk's Office) by April 25, 2023.

Elections - The Annual Town Election will be held on Tuesday, June 13, 2023, at the Whately Town Offices, 4 Sandy Lane from 10:00a.m. - 7:00p.m. The election ballot will include the votes for Elected Town Officials (please see above). Absentee Ballots will be available starting May 23rd for those who will be out of town, physically unable to make it to the Town Offices, or have religious reasons for not being able to vote that date. Mail in applications for absentee ballots must be received by Wednesday June 7, 2023. However, keep in mind that you must allow for the return of the ballot to the Town Clerk before the close of polls on Election Day. You can also vote absentee in person up until Noon on Monday June 12th in the Town Clerk's Office during regular business hours. Registration of voters for the Town Election will be held June 2nd from 9:00am-11:00am and 3:00pm-5:00pm. A copy of the warrant for this election will be posted at the Town Offices, Transfer Station, Post Office, Library, and the Town of Whately website page at www.whately.org by June 5, 2023.

Dog Licenses - This is a reminder that dog licenses need to be obtained by June 1, 2023. If your dog is not licensed by June 1st a late fee of \$50 will be applied to each dog.

There are 4 ways to license your dog(s):

*If a current rabies certificate is on file:

1. Online: www.whately.org - go to Pay bills
2. Drop-box: Located in the parking lot outside of the Whately Town Offices
3. In Person: Cash, check, and/or credit/debit. Checks - payable to the Town of Whately
4. By Mail: Please make check payable to the Town of Whately for the correct amount.

Fees are: Spayed females and neutered males \$10.00 each; Unaltered females and males \$15.00 each.



The WHATELY SCOOP

Certified News for the Town
with the Milk Bottle...

152 Westbrook Road
RFD So. Deerfield, Ma. 01373

PRSRT STD
US Postage Paid
Northampton Ma
Permit no. 801

Whately Postal Customer Whately, Ma. 01093

Way down below the quiet ground
All life continues, all year round
We may not feel it, see it, hear it,
But every year that lively spirit
pushes up to greet the Spring
And soon the birds begin to sing

We cast aside our Winter blues
As sun begins to spread good news
We will be warm, all things will bud
And hardened dirt will turn to mud
Viruses their strength will lose
So listen for Spring's subtle clues.

The Whately Scoop

Cost for printing and mailing the Scoop was provided by the Whately Historical Society and the businesses who place ads within. Please patronize our local businesses!

If you misplace your copy of The Scoop, do not despair! You can always find it on the resources page at www.whatelyhistorical.org.

The closing date for submissions to the May 2023 issue of the Scoop is Wednesday May 17 2024. (For mailing May 22)

Please email your our literary contributions to jpfortune@comcast.net before that deadline. Also use this email if you want to be on the reminder list and get an email from me about 3-4 weeks before the deadline, or if you would like email delivery of the scoop.

Business card sized ads are \$100 for 1 year (4 issues) and a mention in a box on the front page is \$50/year. Please make checks out to: The Whately

Scoop and mail to 152 Westbrook Rd RFD So. Deerfield, 01373

Like the Scoop? Want to see it continue?
Here's what you can do:

- 1) Volunteer to write articles
- 2) Volunteer to help prep the scoop for mailing
- 3) Volunteer to help on mailing day
- 4) Ask your favorite local businesses to place an ad
- 5) Make a donation to help us cover costs

If you are interested in any of those please call or email Joyce at 665-6739;

jpfortune@comcast.net.